

SPECIAL EDITION

THE HEMISPHERES

HURRICANE GUIDE & NEWSLETTER

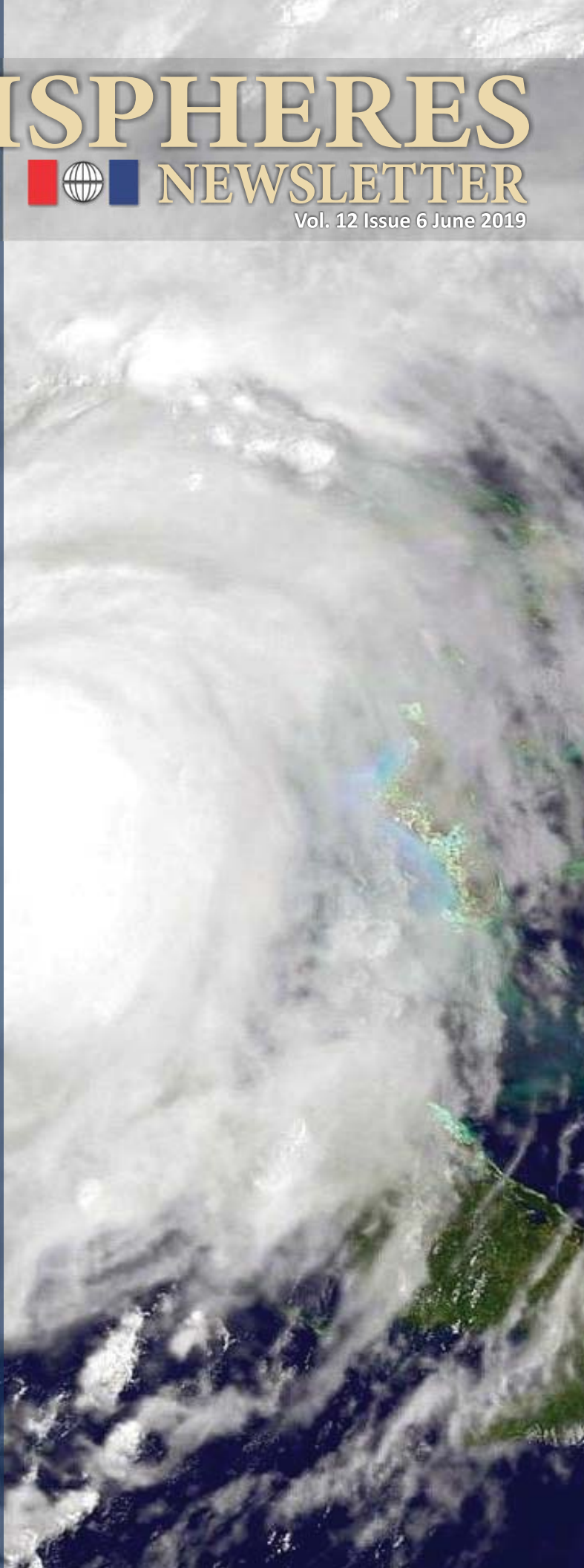
Vol. 12 Issue 6 June 2019

<u>Section</u>	<u>Page</u>
Broward County Checklist	2
Broward County Preparedness	4
Weather Channel Predictions	5
County Evacuation Map	6
Hallandale Preparedness Guide	8
Red Cross Checklist	10
Terminology to be familiar with	12

As part of the Board and Atlantic/Pacific Management protocol for hurricane preparedness, we would like to extend this friendly reminder, followed by some pages of useful information. Please include the following in your Hurricane Plan:

1. To ensure that you receive important notifications, please check with the Management Office at 954 457-9732 to register phone numbers and email.
2. If your health or life is threatened, do not call the management office, please call 911.
3. To contact Security use the following:
Ocean North – 954 457-9732 xt 555
Ocean South – 954 457-9732 xt 554
Bay North – 954 457-9732 xt 558
Bay South – 954 457-9732 xt 561
4. We encourage all residents to heed warnings to evacuate to safe areas and/or shelters.
5. Items on our balconies such as pots, planters, and patio furniture need to be removed.

Please use the following pages to develop a hurricane plan for your family. Let's all be safe during the hurricane season...



EMERGENCY Checklists

- ☐ **10-Step Family Plan**
- ☐ **Shelter Kit**
- ☐ **Special Needs Shelter Kit**
- ☐ **Pet Survival Kit**
- ☐ **Emergency Kit**



10-Step Family Plan

☐ **STEP 1 — Hold a family meeting.**

Discuss what can happen in an emergency. Encourage children to talk about their fears and explain some of the things you'll be doing to keep everyone safe. Start a written list of things you'll need to take care in advance and encourage everyone in the family to contribute their ideas.

☐ **STEP 2 — Discuss whether you'll need to evacuate.**

Determine whether you live in an evacuation zone and, if so, where you will go if an evacuation order is given. Going to a family or friend's house or hotel outside the evacuation area is your best choice. If a hurricane is approaching and you choose to go out of town, do so well in advance of the storm. Since shelters provide for only basic needs, this should be your choice of last resort.

☐ **STEP 3 — Ensure your assets are protected.**

Inventory your home possessions and videotape, record or photograph items of value. Review your insurance policies to ensure you have adequate coverage. Know that once a hurricane watch has been issued, insurers will not issue new or additional coverage.

☐ **STEP 4 — Assess your home for vulnerable areas.**

Do a walk-through of your home and property to evaluate your roof, windows, garage door, landscaping, etc. and determine what actions you will take.

☐ **STEP 5 — Make a plan to protect your vehicles.**

Decide where you will store or park your vehicle, boat or RV. Check your vehicle insurance policy and keep it in the same safe place as your homeowner's policy.

☐ **STEP 6 — Secure your home.**

Decide what actions you will need to take to protect your home and your property (shutters, generator, tree-trimming), and to keep as comfortable as possible during recovery.

☐ **STEP 7 — Determine if anyone in your home has special needs, or is vulnerable in an emergency.**

If anyone in your home has special needs in an emergency because of a medical condition, or because they are elderly or disabled, make arrangements in advance to accommodate those needs.

☐ **STEP 8 — Make a plan for your pets.**

Determine how you will address your pet's needs and make a plan in case you have to evacuate. Be sure to plan for large outdoor animals as well, such as horses, pigs and cows.

☐ **STEP 9 — Gather your supplies.**

Use the checklist provided to determine your family's food, water and medical needs and assemble your emergency kit according to those needs.

☐ **STEP 10 — Notify others of your plan.**

Let family or friends know what your emergency plan is so they can check on you in the aftermath of the event. Establish an out-of-town contact.

Broward.org/Hurricane

READY. SET. SAFE.

For more preparedness information, visit
Broward.org/Hurricane and **Broward.org/AtRisk**





Shelter Kit

While a shelter is intended to help keep you safe during a storm or other emergency, it isn't a hotel. Bring these essential items along to make your stay as comfortable as possible.

- ☐ Bedding such as pillows, blankets, air mattress
- ☐ Books, games
- ☐ Non-perishable snacks
- ☐ Extra change of clothing
- ☐ Sanitary wipes or other hygiene products
- ☐ Flashlight
- ☐ Medications, if any
- ☐ Driver's license, other identification
- ☐ Cash, traveler's checks
- ☐ Cell phone and mobile device with charger
- ☐ Personal items such as extra eyeglasses, hearing aid, etc.
- ☐ Battery-operated radio
- ☐ Extra batteries for radio and flashlight
- ☐ Baby supplies: ample amounts of baby food, formula, juice, diapers and wipes, and a stroller, portable crib or play pen
- ☐ Important documents such as birth or marriage certificates, social security cards, passports, immunization records, check-book and bank account files, wills, vehicle titles, insurance policies, stocks, bonds, deeds, important electronic files.

Special Needs Shelter Kit

(Bring these items in addition to those on the Shelter Kit Checklist)

- ☐ Communication Aids (paper, pencils, pens or mobile device)
- ☐ Batteries or charger for communication aids
- ☐ Emergency health information card & emergency contacts
- ☐ Mobility equipment (walker, wheelchair)
- ☐ Dressing devices for clothing
- ☐ Sanitary supplies
- ☐ Hearing devices and batteries
- ☐ Health monitors
- ☐ Dentures or retainers
- ☐ Heavy gloves to use maneuvering wheelchair
- ☐ Special dietary foods, if required (meals are provided at shelter)
- ☐ Bedding (medical cot provided)
- ☐ Folding Lawn/lounge chair
- ☐ Service animal supplies

* A medical cot will be provided

Pet Survival Kit

- ☐ A crate or carrier large enough for the animal to stand and turn around
- ☐ Two-week supply of food, water and any required medications
- ☐ Bowls (food and water)
- ☐ Cat litter and litter box
- ☐ Toys and/or blanket
- ☐ Treats
- ☐ Photo of your pet with you (to prove you are the owner)
- ☐ Rabies certificate and current license
- ☐ Veterinarian name and emergency contact information
- ☐ Cleaning supplies (newspaper, plastic bags with ties, paper towels, disinfectant), litter scooper

Emergency Kit

- ☐ Drinking Water: At least one gallon per person per day for three to five days. Extra water is needed for food preparation, pets and personal hygiene.
- ☐ Food: Enough for three to five days, including non-perishable packaged or canned food, canned or shelf milk, cereal, snack foods
- ☐ A three to five day supply of special items for babies and/or the elderly: formula, food, wipes, diapers; special foods, toiletries
- ☐ Manual can opener/bottle opener
- ☐ Paper goods (toilet paper, plates, bowls, napkins, paper towels and plastic eating utensils)
- ☐ Unscented household bleach and medicine dropper
- ☐ Extra bedding such as blankets, pillows, sleeping bag, etc. in case you must evacuate
- ☐ Clothing, including rain gear and sturdy shoes
- ☐ First aid kit
- ☐ Medicines/prescription drugs: a two-week supply
- ☐ Hand sanitizer and sanitary wipes
- ☐ Flashlight and extra batteries
- ☐ Battery-operated or hand-crank radio
- ☐ Disposable batteries, car charger or solar charger for your cell phone
- ☐ Hardline telephone with jack (not cordless)
- ☐ Books, games and toys
- ☐ Pet food, cat litter and other pet care items
- ☐ Tool kit including cord, rope, hammer, wood nails, saw, hatchet or axe, crowbar, chain saw blades, tarp, duct tape and heavy work glove, outdoor extension cords
- ☐ Plastic trash bags and ties
- ☐ Extra re-sealable plastic storage bags, heavy-duty aluminum foil, disposable aluminum pans
- ☐ Extra charcoal or propane gas for outdoor cooking. Sterno can also be used. Never cook with any of these items inside your house. The smoke and fumes are deadly.
- ☐ Fire extinguisher (ABC type)
- ☐ Matches in a waterproof container
- ☐ Mosquito repellent with DEET, and sunscreen
- ☐ Home Damage Assessment photos and instructions. Visit Broward.org/Hurricane
- ☐ Any other special equipment or items you may need



A service of the Broward County Board of County Commissioners.
An equal opportunity employer and provider of services.

Broward.org/Hurricane

READY. SET. SAFE.



6/16 EM201661179

Broward Hotline
311 or 954-831-4000

Plan for the Storm's Approach

Plan in Advance

If you live in an evacuation zone and an evacuation is ordered, by law you are required to evacuate. Public shelters are a refuge of a last resort. Remember, shelters are not designed for comfort and only one shelter in the area allows pets. Service animals are allowed in all shelters.

Identify a Safe Room

If you plan to stay at home, identify the safest room in your home. This is generally an interior room with no windows, such as a bathroom or closet. Make plans to take shelter in this room in the event of a direct hit or tornado warnings.

Request assistance if needed

If you require special assistance in evacuating or need to stay at a Special Needs shelter, call Broward Emergency Management at 954 831-3902. If a member of your family is frail, elderly or disabled and may become vulnerable in the aftermath of a storm, register them with Broward County's Vulnerable Population Registry. Call 954 831-4000 or online visit Broward.org/Hurricane and select Residents at Risk.

Stock your Hurricane Kit

Plan on supplies including food and water that will sustain your family for three to five days, and a two-week supply of medicines.

If Evacuating out of the area, leave early

Plan to leave at least 48 hours in advance, and no later than the issuance of a Hurricane Watch. Keep in mind that a hurricane's path is uncertain and you could inadvertently evacuate into an area where the storm may eventually strike. Take along your hurricane kit.

Document Assets and Protect Important Papers

Make a visual or written record of your assets for insurance purposes. Also, photograph the interior of the apartment and take all documentation with you. Photocopy all important papers such as insurance policies and store them in a safe deposit box outside the hurricane area. Or protect these documents in a waterproof container.

Request assistance if needed

If you require special assistance in evacuating or need to stay at a Special Needs shelter, call Broward Emergency Management at 954 831-3902. If a member of your family is frail, elderly or disabled and may become vulnerable in the aftermath of a storm, register them with Broward County's Vulnerable Population Registry. Call 954 831-4000 or online visit Broward.org/Hurricane and select Residents at Risk.

Set Appliances and get Gas

Turn refrigerators and freezers to highest settings in anticipation of a power outage. Charge your cell phone and mobile devices and obtain a car charger to help charge mobile devices after the storm. Gas pumps do not work without electricity so fill your tank before the storm.

Plan for your Pet

For a list of pet-friendly hotels or shelters please visit Humanebroward.com.

2019 Hurricane Season Update

A graphic titled "ATLANTIC HURRICANE FORECAST 2019" comparing the 2019 forecast to the 30-year average and the 2018 season. The background is a blurred image of palm trees and a beach. The data is presented in a table with three rows and four columns. The 2019 forecast column is highlighted in red.

ATLANTIC HURRICANE FORECAST			2019
	AVG	CSU	2018
TOTAL NAMED STORMS	12	13	15
HURRICANES	6	5	8
CATEGORY 3 OR HIGHER	3	2	2

Numbers of Atlantic Basin named storms (those that attain at least tropical or subtropical storm strength), hurricanes, and hurricanes of Category 3 intensity forecast by Colorado State University compared to the 30-year average and totals from the 2018 season.
(Forecast: Tropical Meteorology Project/Colorado State University)

2019 Hurricane Season Predictions

The 2019 Atlantic hurricane season may see fewer storms and hurricanes, but that doesn't necessarily mean it will be less dangerous. According to a newly released outlook from the Colorado State University Tropical Meteorology Project the prediction calls for a total of 13 named storms, five hurricanes and two major hurricanes. This is near the 30-year average of 12 named storms, six

hurricanes and three major hurricanes. A major hurricane is one that is Category 3 or stronger on the Saffir-Simpson Hurricane Wind Scale. There are several reasons forecasters are calling for these near-average numbers in 2019:

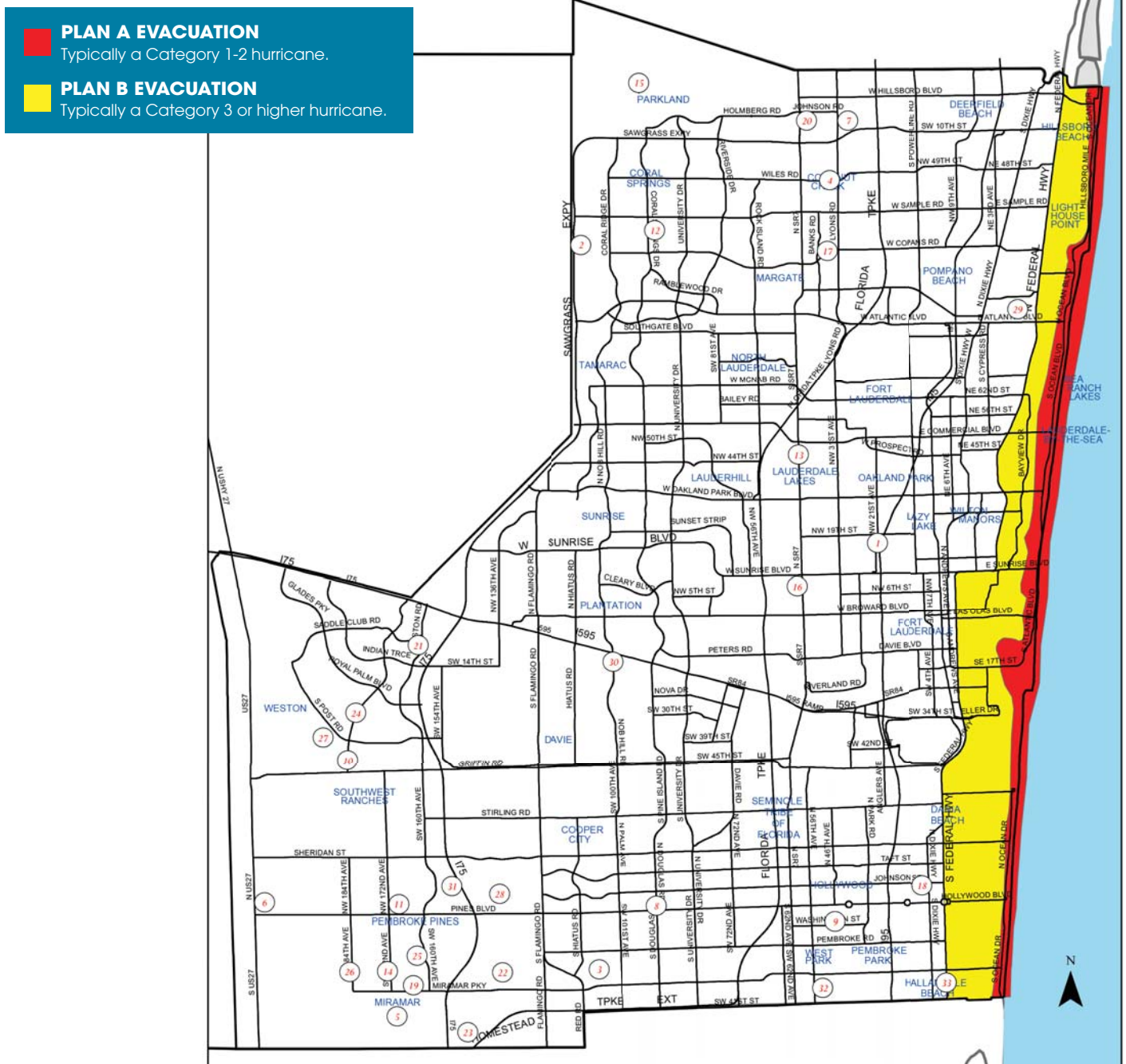
- El Niño, the periodic warming of the central and eastern equatorial waters of the Pacific Ocean is currently in place and may be gaining some strength. El Niño tends to produce areas of stronger wind shear (the change in wind speed with height) and sinking air in parts of the Atlantic Basin that are hostile to either the development or maintenance of tropical cyclones.
- The current water temperatures across the North Atlantic basin show cooler-than-average temperatures in the far North Atlantic and in the eastern tropical Atlantic between the Lesser Antilles and Africa. Warmer-than-average water is widespread in the Gulf of Mexico, off the southeast coast of the U.S. and in the central Atlantic Ocean. Water temperatures of 80 degrees or higher are generally supportive of tropical storm and hurricane formation and the early spring configuration of temperature anomalies lined up with previous below-average hurricane seasons.

There is no strong correlation between the number of storms or hurricanes and U.S. landfalls in any given season. Residents near the coast should prepare each year, no matter what seasonal outlooks say. For example, the 1992 hurricane season produced only six named storms and one subtropical storm. However, one of those named storms was Hurricane Andrew, which devastated South Florida as a Category 5 hurricane. In contrast, the 2010 hurricane season was active, Despite the high number of storms that year, no hurricanes and only one tropical storm made landfall in the U.S.

EMERGENCY SHELTER MAP

The following shelters may not all open during a state of emergency. They are opened as needed. If possible, staying with family or friends outside an evacuation zone is your first and best option. Monitor Broward County's website, Broward.org/Hurricane, local television stations or call our Emergency Hotline at 311 or 954-831-4000 for actual shelter openings. Emergency shelters are a service of the Broward County Commission and the Broward County School Board.

Persons located in low lying areas or beside tidal bodies of water should seek shelter elsewhere if conditions warrant. **ALL** mobile home residents must evacuate in PLAN A and PLAN B and may be ordered to evacuate if tropical storm conditions warrant.



A service of the Broward County Board of County Commissioners. An equal opportunity employer and provider of services.

1,000 copies of this public document were promulgated at a gross cost of \$205, or \$0.205 per copy, to provide members of the public with emergency preparedness information. PI201867423

Special Needs Shelter: These shelters are for persons with medical conditions who do not require hospitalization. They provide basic medical assistance and monitoring. Pre-registration is strongly recommended by calling 954-831-3902 (TTY 954-831-3940).

Pet-Friendly Shelter: Staying with family, friends or at a pet-friendly hotel outside an evacuation zone should be your first and best option. Pet-friendly shelter(s) is available on a first-come basis. Pets accepted include: dogs, cats, domestic birds, rabbits, gerbils, guinea pigs, mice and hamsters. All pets must be in a carrier/crate and all dogs must have a collar with leash. Evacuees must show proof of rabies certificate for dogs and cats. Residents should also be prepared to show their pet's Broward County Registration Tag. Evacuees should bring necessary care supplies for a week such as, supply of food and water, food/water bowls, cat litter and litter box, medicine, cleaning supplies, etc.

General Population and Pet-Friendly Shelters

- 1) **Arthur Ashe/Rock Island**
1701 NW 23rd Avenue, Ft. Lauderdale 33311
- 2) **Coral Glades High School**
2700 Sports Plex Drive, Coral Springs 33065
- 3) **New Renaissance Middle School**
10701 Miramar Blvd, Miramar 33025
- 4) **Monarch High School**
5050 Wiles Road, Coconut Creek 33073
- 5) **Everglades High School - Pet Friendly**
17100 SW 48th Court, Miramar 33027
- 6) **West Broward High School**
500 NW 209th Avenue, Pembroke Pines 33029
- 7) **Lyons Creek Middle School - Pet Friendly**
4333 Sol Press Blvd, Coconut Creek 33073
- 8) **Pines Middle School**
200 NW Douglas Road, Pembroke Pines 33024
- 9) **Orange Brook Elementary School**
715 S. 46th Avenue, Hollywood 33021
- 10) **Falcon Cove Middle School - Pet Friendly**
4251 Bonaventure Blvd, Weston 33332
- 11) **Panther Run Elementary School**
801 NW 172nd Avenue, Pembroke Pines 33029
- 12) **Parkside Elementary School**
10257 NW 29th Street, Coral Springs 33065
- 13) **Park Lakes Elementary School**
3925 N. State Rd 7, Lauderdale 33319
- 14) **Silver Lakes Elementary School**
2300 SW 173rd Avenue, Miramar 33027
- 15) **Park Trails Elementary School**
10700 Trails End Road, Parkland 33076
- 16) **Plantation Elementary School**
651 NW 42nd Avenue, Plantation 33017
- 17) **Liberty Elementary School**
2450 Banks Road, Margate 33063
- 18) **Beachside Montessori Village Elementary School**
2230 Lincoln Street, Hollywood 33020
- 19) **Dolphin Bay Elementary School**
16450 Miramar Parkway, Miramar 33027
- 20) **Tradewinds Elementary School**
5400 Johnson Road, Coconut Creek 33073
- 21) **Gator Run Elementary School**
1101 Glades Parkway, Weston 33327
- 22) **Coconut Palm Elementary School**
13601 Monarch Lakes Blvd, Miramar 33027
- 23) **Coral Cove Elementary School**
5100 SW 148th Avenue, Miramar 33027
- 24) **Everglades Elementary School**
2900 Bonaventure Blvd, Weston 33331
- 25) **Silver Shores Elementary School**
1701 SW 160 Avenue, Miramar 33027
- 26) **Sunset Lakes Elementary School**
18400 SW 25th Street, Miramar 33029
- 27) **Manatee Bay Elementary School**
19200 Manatee Isles Dr., Weston 33332
- 28) **Lakeside Elementary School**
900 NW 136th Avenue, Pembroke Pines 33026
- 29) **Pompano Beach High School**
600 NE 13th Avenue, Pompano Beach 33060
- 30) **Fox Trail Elementary School**
1250 Nob Hill Road, Davie 33324
- 31) **Silver Palms Elementary School**
1209 NW 155th Avenue, Pembroke Pines 33028
- 32) **Watkins Elementary School**
3520 NW 52nd Avenue, Pembroke Park 33023
- 33) **Hallandale Elementary School (Gulfstream Academy)**
1000 SW 8th Street, Hallandale 33009



HURRICANE PREPAREDNESS GUIDE

The City of
Hallandale Beach

Department of Fire
Rescue

Hurricane
Preparedness

www.cohb.org



The City of Hallandale Beach

Department of Fire Rescue
121 SW 3rd Street
Hallandale Beach, FL 33009

Phone: 954-457-1470
Fax: 954-457-1472
www.cohb.org

Emergency Phone Numbers

Emergency 911

First Call for Help 211

Broward County Hotline 954 831-4000
954 831-3940

Broward County Elderly and
Veteran Services 954 537-2888
954 537-2882

Broward County School District 754 321-0321

Elder Affairs Hotline 800 963-5337

FEMA Hotline 800 342-3557
800 413-9900

Frequently Called Numbers

Broward County Health Dept. 954 467-4700

National Flood Insurance 800 638-6620

FEMA 800 621-3362
800 462-7585

Non-Emergency Dispatch 954 765-4321

Comcast Cable 954 252-1937

Bell South from Bell South Phone 888 757-6500

TECO People's Gas 877 832-6747

Florida Power & Light:
Outages 800 468-8243
Reporting sparking line 911

Pet Care

Pet Friendly Shelter Registration 954 989-3977

Large Animal Registration 954 370-3725

Animal Care & Regulation 954 359-1313

Volunteer Organizations

American Red Cross Broward 954 797-3800

Salvation Army 954 254-6991

United Way 954 462-4850

Volunteer Broward 954 522-6761

Neighbors to the Rescue 954 522-6761

The City of Hallandale Information

City Hotline Number 954 458-3251

Information Radio 1620 AM

Comcast Cable Channel 78

City Website www.cohb.org

The City of Hallandale - Trash

- Place all debris adjacent to the street, but keep the debris out of swales.
- Be patient. Debris removal operations after a hurricane hits can take several weeks for implementation.

The City of Hallandale - Water

- Be prepared in the event city water service is discontinued.
- Have bottled water in stock and fill bathtub for sanitation.
- The City of Hallandale has its own water treatment plant.
- Unless the media specifically states that Hallandale water needs to be boiled, the water is safe for drinking.

Red Cross Hurricane Safety Checklist

The American Red Cross provides a hurricane safety checklist that can be distributed to residents. Visit [RedCross.org](https://www.redcross.org) for a copy.

Resident preparation plan includes:

- Listen to a NOAA Weather Radio for critical information from the National Weather Service.
- Check disaster supplies and replace or restock as needed.
- Close windows, doors and hurricane shutters. If you do not have hurricane shutters, close and board up all windows and doors with plywood.
- Turn the refrigerator and freezer to the coldest setting and keep them closed as much as possible so that food will last longer if the power goes out.
- Turn off propane tanks and unplug small appliances.
- Fill your car's gas tank.
- Create a household evacuation plan with your family. Planning and practicing your evacuation plan minimizes confusion and fear during the event.
- Learn about your community's hurricane response plan.
- Plan routes to local shelters, register family members with special medical needs as required and make plans for your pets to be cared for.
- Evacuate if advised by authorities. Be careful to avoid flooded roads.

Hurricane Supplies:

- Water, at least a 3-day supply; one gallon per person per day
- Food, at least a 3-day supply of non-perishable, easy-to-prepare food

- Flashlight and Extra Batteries
- Battery-powered or hand-crank radio (NOAA Weather Radio, if possible)
- First aid kit including medications (7-day supply) and medical items (hearing aids with extra batteries, glasses, contact lenses, syringes, cane)
- Sanitation and personal hygiene items
- Copies of personal documents (medication list and pertinent medical information, proof of address, deed/lease to home, passports, birth certificates, insurance policies)
- Cell phone with chargers
- Family/emergency contact
- Extra cash
- Map(s) of the area
- Baby supplies (bottles, formula, baby food, diapers)
- Pet supplies (collar, leash, ID, food, carrier, bowl)
- Tools/supplies for securing your home
- Extra set of car keys and house keys, extra clothing, hats, sturdy shoes, and raingear
- Insect repellent and sunscreen
- Camera for photos of damage



**American
Red Cross**

Staying Safe during a Hurricane

- Stay indoors. Don't walk on beaches or in flood waters.
- Use flashlights in the dark if the power goes out. Do NOT use candles.
- Continue listening to local area radio, NOAA, or TV stations for the latest information or updates.
- Turn off the power and water mains if instructed to do so by local authorities.

Staying Safe Outdoors

- Don't walk, swim or drive through floodwater. Just six inches of fast-flowing water can knock you over and two feet will float a car.
- If caught on a flooded road with rapidly rising waters, get out of the car quickly and move to higher ground.
- Don't walk on beaches or riverbanks.
- Don't allow children to play in or near flood water.
- Avoid contact with floodwater. It may be contaminated with sewage or contain dangerous insects or animals.
- Stay out of areas subject to flooding. Underpasses, dips, low spots, canyons, washes, etc. can become filled with water.



What do I do after a hurricane?

- Continue listening to NOAA Weather Radio or local news for updates.
- Stay alert for extended rainfall and subsequent flooding even after the hurricane or tropical storm has ended.
- If you evacuated, return home only when officials say it is safe.

- Drive only if necessary and avoid flooded roads and washed-out bridges.
- Keep away from loose or dangling power lines and report them immediately to the power company.
- Stay out of any building that has water around it.
- Inspect your home for damage. Take pictures of damage, both of the building and its contents, for insurance purposes.
- Use flashlights in the dark. Do NOT use candles.
- Avoid drinking or preparing food with tap water until you are sure it's not contaminated.
- Check refrigerated food for spoilage. If in doubt, throw it out.
- Wear protective clothing and be cautious when cleaning up to avoid injury.
- Watch animals closely and keep them under your direct control.

For more information on disaster and emergency preparedness, visit

<http://www.redcross.org>



A satellite image of a tropical storm, showing a large, swirling cloud system over the ocean. The storm has a distinct eye and is surrounded by dense, white clouds. The ocean surface is visible in the lower part of the image, showing some smaller waves and cloud formations.

Terminology to be familiar with

Tropical Wave – A cluster of clouds and/or thunderstorm without a significant circulation that generally travels from east to west through the Tropics.

Tropical Depression - A cluster of clouds and/or thunderstorm without a significant circulation and contains sustained wind speeds of less than 39 mph.

Tropical Storm - An organized system of strong thunderstorms with top sustained winds of 39 mph to 73 mph. Tropical storms can quickly develop into hurricanes. Storms are named when they reach tropical storm strength.

Tropical Storm Watch - Tropical storm conditions are expected in the specified area of warning, within 36 hours.

Hurricane - An intense tropical weather system with a sustained wind speed of 74 mph or higher.

Storm Surge - Storm surge is an abnormal rise of water generated by a storm, over and above the predicted astronomical tide. It's the change in the water level that is due to the presence of the storm.

Evacuation Zones - Areas identified by the likelihood of being flooded by this rising water and is responsible for most hurricane deaths. Immediate action to protect family and property is necessary.

Hurricane Watch - Hurricane Conditions are expected in the specified area of the warning within 36 hours. During a hurricane watch, prepare to take immediate action to protect your family and property in case a hurricane warning is issued.

Hurricane Warning - Hurricane Conditions are expected in the specified area of the warning within 24 hours. Complete all storm preparations and follow local emergency management officials' advice about evacuation.

Tornado - Tornadoes occur usually in severe thunderstorms when wind changes direction and height, causing rotation. Wind speeds range from 40 mph to 318 mph. Land falling rain band.



JUNE BLUE LIVE



BLUE
Disco, R&B, Soul

BRAZILIAN
night

7TH



WHITE
party

with **PURO SABOR**

14TH



TACO
NIGHT

with **DJ KWICK**

21TH



LADIES
NIGHT

28TH

DJ Kwick

EVERY FRIDAY

SATURDAY
8TH

Jazmin Sabyna




Caribbean
NIGHT

with **CLIFF MAYER**

SATURDAY
15TH



SATURDAY
22ND

Soul
STREET

CLASSIC
MOTOWN
R&B
DISCO
SOUL



ROLANDO POLO

POP OPERA TENOR • 1 TO 5PM

SUNDAY
23RD



SATURDAY
29TH

the MOTOWNERS
"THE ULTIMATE
MOTOWN TRIBUTE"



www.bluebargrill.com

RESERVATION **(954) 251-2658**

1960 S. OCEAN DRIVE HALLANDALE BEACH - FL 33009

Located in the Hemispheres Condo - Ocean Side

Lets Hear It For The

memorial
★ DAY

FLAG
DAY



THE HEMI

FOR SALE

ON 9N...\$550,000
ON 14A...\$319,500
ON 14G...\$524,500
ON 8H...\$499,500
ON 8P...\$609,000

FOR RENT

BS 22M...\$1,700
BS 11P...\$3,600
ON 20F...\$2,500
OS 19Q...\$2,800
OS 5E...\$4,500



Gladys

CERTIFIED LUXURY HO

305.32

GMREALTOR

ELITE PROPERTIES



BARBARA DRABKIN - REALTOR ASSOCIATE
954.743.1905

BUYING, SELLING, RE
Ocean North

RED WHITE & BLUE



FOR SALE

ON 12Q...\$985,000
OS 18L...\$230,000
OS 18N...\$250,000
OS 14H...\$435,000
BS 18E...\$495,000

FOR RENT

OS 15F...\$2,950
OS 5F...\$3,950
ON 17N...\$1,800
BS PHK...\$2,500

Martinez

HOME MARKET SPECIALIST

21.7889

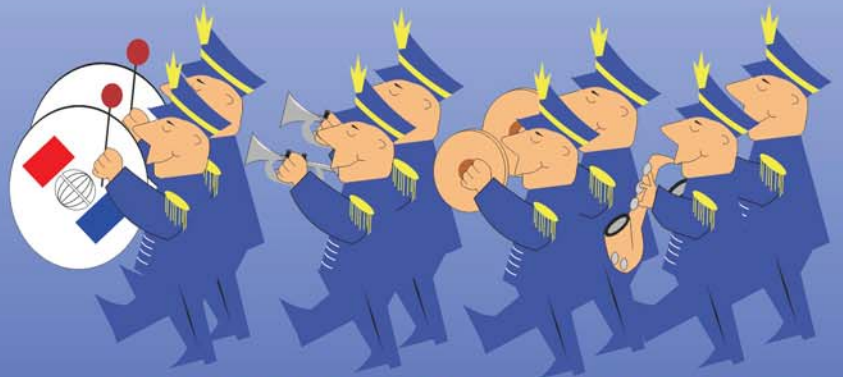
7@gmail.com

& INVESTMENTS LLC



MENTING & FINANCING

Lower Lobby



LEE BRADLEY - REALTOR ASSOCIATE

954.826.6099



Hemispheres Treasurer's Report as April 30, 2019 Financial Statements

The Board's strategic plan continues to focus on implementing long-term renovation projects. As Treasurer our financial goal is to reinvest in association infrastructure while keeping the cost to residents as low as possible. As a start to this reinvestment, Bengoa construction is currently well into the badly needed repairs of the Ocean South Garage. Monitoring of the project includes both financial and operational processes so that we move forward in a professional and economical manner. Since the first of the year \$432,190 has been committed to the project and expenses broken out as follows:

Thornton Tomasetti (Engineering Supervision) - \$86,191

Bengoa (Construction) - \$345,999

Not including project expenses, the positive net income for the 2019 operating accounts is a balance of \$101,965. Accounts with large budget variances reflecting either balances or deficits include the following:

Legal - \$29,484 balance not including billings for the 2000 Ocean construction

Line of Credit - \$88,617 balance not currently accessed for the project

Total Salaries - \$23,987 balance caused by vacant administration position and bonus pay

Pool Furniture - Purchase of badly needed furniture caused a \$43,507 deficit

Building/Grounds Supplies - Deficit of \$26,998 caused by emergencies and work in units

Currently our Accounting team continues to keep our accounting records and practices in place as required by Florida Statute 718 and GAAP. Management and the Board will continue to carefully monitor all operating and project balances to provide quality services and cash flow to fund future infrastructure renovations.

Alfred Marzouk - Treasurer

Hemispheres Condominium Association Financial's Report

As of April 30, 2019

Checkbook Balances:

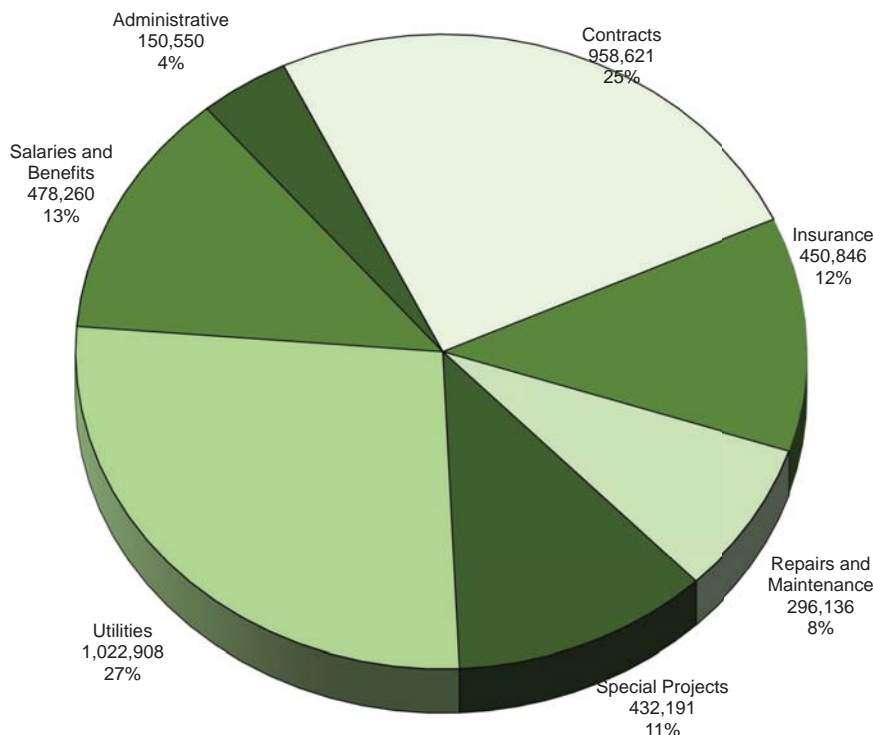
Operating	\$	3,970,799.84
Capital Projects		1,011,856.81
Security Deposit/Clicker/Marina Deposit		625,623.06
Reserves		335,328.16
Total Checkbook Balances as of April 30, 2019	\$	5,943,607.87

Account Receivable Delinquencies	\$	235,557.08
Accrued balance of prepayment of our Insurance Premium		297,977.09
Accounts payable to the trade		257,652.59

Revenue and Expenses:

	Month	Year-to-Date	Budget (Year-to-Date)
Income	\$ 947,909.14	\$ 3,796,154.16	\$ 3,804,087.00
Expenses:			
Salaries and Benefits	\$ 123,596.83	\$ 478,260.13	\$ 502,247.28
Administrative	43,626.40	150,549.51	165,592.84
Insurance	112,712.41	450,845.65	436,333.32
Utilities	239,910.02	1,022,907.52	1,019,440.08
Contracts	238,492.49	958,621.46	971,438.08
Repairs, Maint, Supplies	53,935.24	296,136.02	260,172.16
Bad Debt	0.00	1,622.06	25,000.00
Reserve Transfer	83,811.51	335,246.04	335,246.04
Line of Credit Interest	0.00	0.00	88,617.20
Total Expenses	896,084.90	3,694,188.39	3,804,087.00
Surplus/(Deficit) Without Projects	\$ 51,824.24	\$ 101,965.77	\$ -
Special Projects - Phase 0	225,487.17	432,190.70	0.00
Surplus/(Deficit)	\$ (173,662.93)	\$ (330,224.93)	\$ -

*Hemispheres Condominium Association
2019 Expenses Breakdown*



**Where
does
the money
go?**



**Alfred Marzouk,
Treasurer**

In Loving Memory of Mazie Ford



On Monday, May 6, 2019, our eldest resident at the Hemispheres, Mazie Ford, passed away. Mazie would have turned 113 years old on June 28, 2019. She was one of the oldest living residents in Broward County and the second oldest in Florida.

Mazie first moved to Hallandale Beach in the early 70's soon after the Hemispheres condominium was built. She lived at the Hemispheres for over 50 years and enjoyed overlooking the ocean from her living room window. For years, she had a passion for knitting. She knitted hats for newborns and cancer patients at Memorial Regional Hospital. She also enjoyed creating art. Her collection of oil paintings, hand beaded flowers and knitted hats for babies were her most precious passions.

Mazie Ford inspired many in the community with her volunteer efforts. Her artistic talents, enthusiasm for life and generous heart derived from her parent's sound teachings. She attributed her long and wonderful life to being active, reading a lot, keeping her mind busy and keeping in contact with all of her loved ones.

Mazie Ford was a true inspiration to all and we are proud to have had her with us at the Hemispheres! Mazie's funeral arrangements will be held in Philadelphia where she once lived prior to coming to the Hemispheres. We send our deepest condolences to her friends and family.



GRAND OPENING



YOUR REALTOR AND NEIGHBOR AT THE HEMISPHERES IS PROUD TO ANNOUNCE
THE GRAND OPENING OF OUR NEW OFFICE SPACE CONVENIENTLY LOCATED
IN THE LOWER LOBBY OF BAY SOUTH (GL4)



“AS A HEMISPHERES RESIDENT I CARE ABOUT THE VALUE OF YOUR PROPERTY”
BUYING? SELLING? OR RENTING?
PERFORMANCE MATTERS!



MIRIAM AYALA LIC. BROKER

305.219.2297

Miriamayalasellsflorida.com Miriamayalarealtor@gmail.com

1985 S. Ocean Dr. GL-4 Hallandale Beach, FL 33009



FOR A HEMISPHERES COMMITTEE

Activities - Geoffrey Colton - Board Liaison

Parking - Alfred Marzouk - Board Liaison

Rules & Regulations - Leonard Davenport - Board Liaison

Renovations - David Simhon - Board Liaison

Amenities - Hank Rosenblum - Board Liaison

Beach **FULL** **Education** - Ivonne Gonzalez - Board Liaison

To volunteer, please contact us at:
volunteers@thehemispheres.com

Please Include The Following:

*The Committee you want to join, Your Name, Building No., Apt No., Phone No.
and a brief introduction of yourself.*

ANNUAL RENTALS

Alquileres Anuales



BS-6N 1/1.5 Furnished

SEASONAL RENTALS

Alquileres por Temporada



ON-19D 1/1.5



OS-12B 1/1.5



OCEAN DREAMS
REALTY LLC

"We want to make your Real Estate
Dreams come true."

Martha Peña - Broker Owner

T: (305) 905-4392 • E: mpena428@aol.com

Pepe Peña

T: (305) 261-1945 • E: pepepena@aol.com

HABLAMOS ESPAÑOL

FOR SALE
Propiedades En Venta

HEMISPHERES



BS - 22D 1/1.5 Furnished

LAKE POINT TOWERS



Unit 1210 2/2 Convertible
ESTATE SALE
Low Maintenance

YOUR HEALTH IS OUR PRIORITY



HALLANDALE
MEDICAL CENTER



We are fully
JCAHO Accredited

HABLAMOS ESPAÑOL
VORBIM ROMANESTE



Stuart G. Gold, PsyD, PhD

Catherine Funes, PsyD, LMHC

Juan Borja, DO

Luis A. Moya, MD

Sadie Abboud, MSN, FNP-BC

Oana Ciurea, PA-C

COMPREHENSIVE PRIMARY CARE & BEHAVIORAL HEALTH

HALLANDALE BEACH

200 E. Hallandale Beach Blvd
Hallandale Beach, FL 33009

MAJOR
INSURANCES
ACCEPTED

HOURS OF OPERATION

MONDAY - FRIDAY
FROM 7:30AM TO 7:00PM

We Accept Medicare & MA Plans
www.hallandalemedicalcenter.com

954.DOCTORS
3 6 2 8 6 7 7



HEMISPHERES SHUTTLE BUS SCHEDULE

ORDER OF BUS ROUTE (Monday - Friday)

EVERY DAY - 3 Main Stops

1. Walmart Shopping center
2. Diplomat Shopping center (Winn Dixie)
3. Publix and Dollar General

WEDNESDAY ONLY 1st Trip of Day - By Request (Last Return Pick up 11:45 AM sharp)

1. Hallandale Federal Highway Library
2. Target, Whole Foods & Best Buy
3. Gulf Stream Park

EVERY DAY - By Request Only

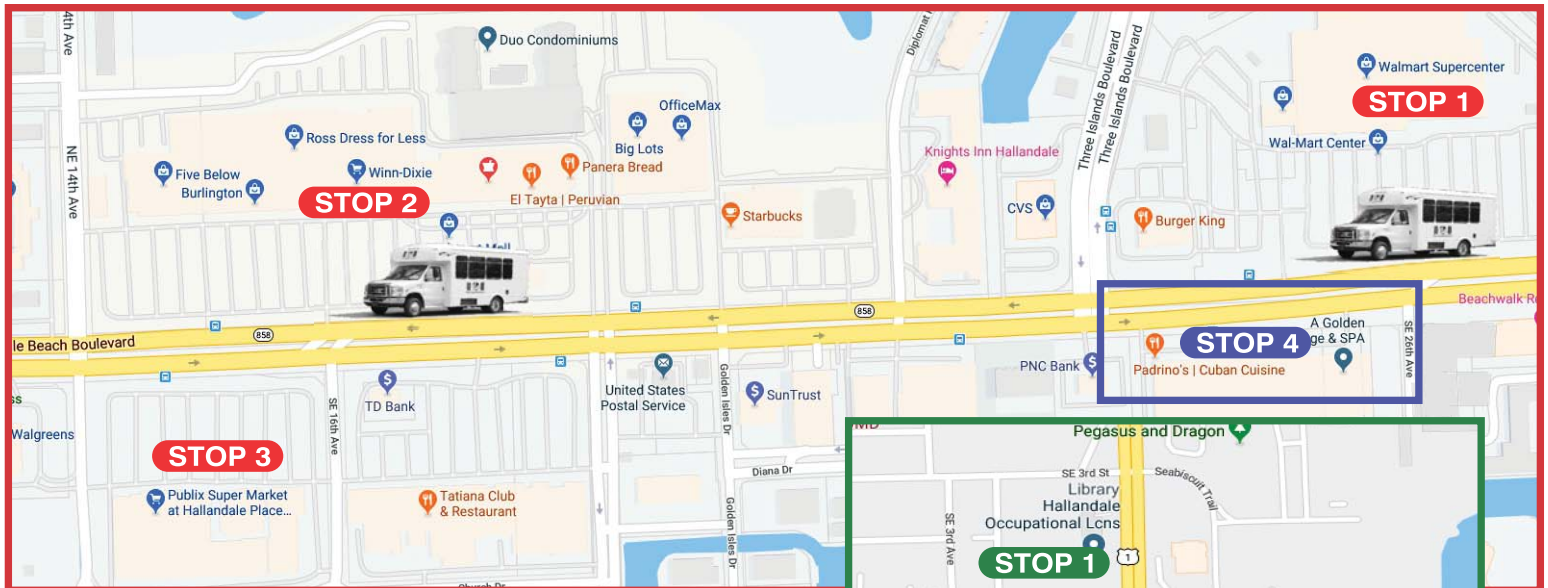
1. Hallandale Beach Blvd Dollar Tree
2. Bank of America
3. Sage Plaza
4. Millennium Plaza (2500 Building)

The Hemispheres Shuttle Bus runs Monday, Wednesday and Friday - local trips only, from May through October.

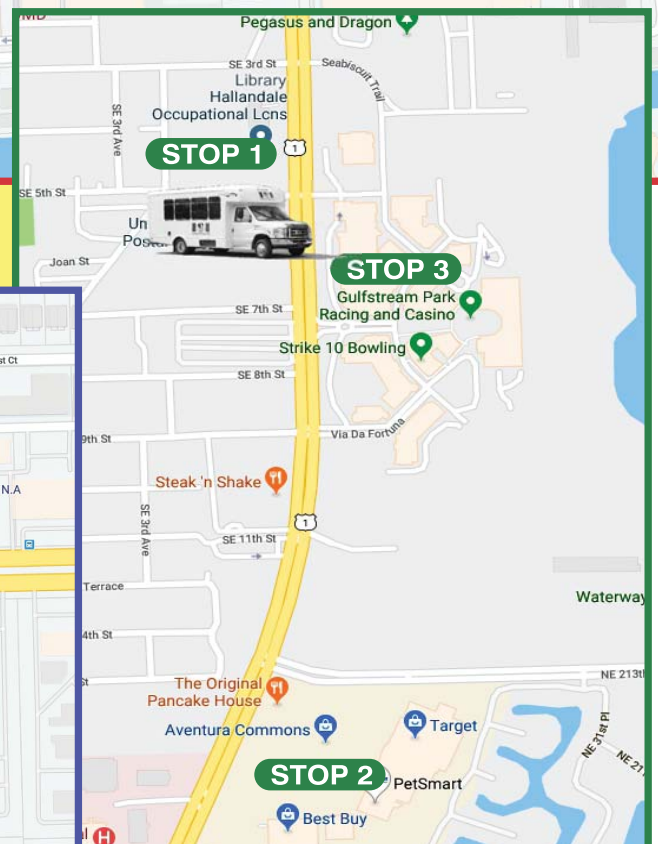
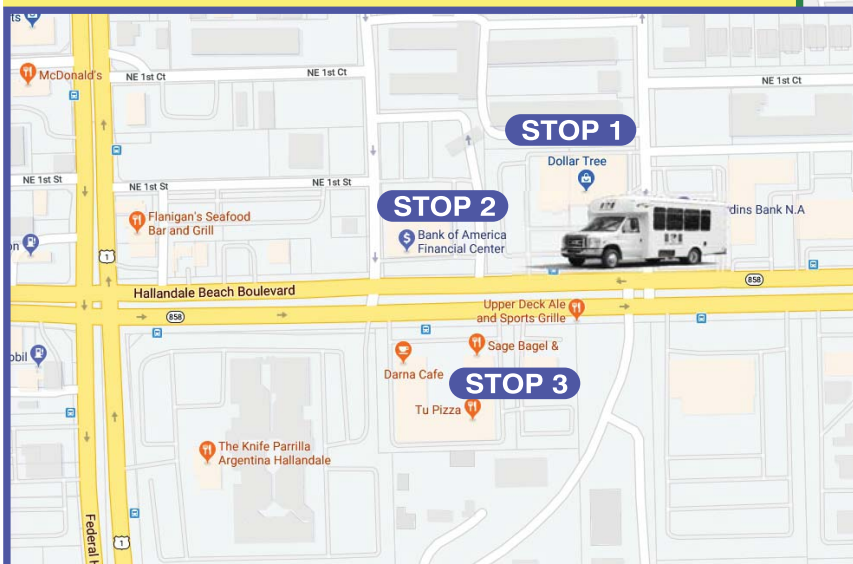
THE BUS DOES NOT RUN ON:

New Years Day, Independence Day, Labor Day, Thanksgiving Day and Christmas Day

	Bay North	Bay South	Ocean North	Ocean South	Publix
AM	9:15	9:20	9:30	9:25	10:10
	10:15	10:20	10:30	10:25	11:10
	11:15	11:20	11:30	11:25	12:00
PM	1:15	1:20	1:30	1:25	2:10
	2:15	2:20	2:30	2:25	3:00



BUS ROUTE MAPS



WHAT'S NEW THIS MONTH AT THE HEMISPHERES?



**Stephanie
Sicard**
Newsletter Manager



954-457-9732 ext. 304
adminassistant@thehemispheres.com

Dear Residents,

As a reminder Hurricane season begins June 1 and ends on November 30. Our team is reviewing our past protocols and updating them as needed to ensure our preparedness for any weather event that may occur during hurricane season.

Please be aware that Management and staff are working to ensure the security of our property and safety of our residents during any weather event.

We advise all snowbirds to clear their balconies of ALL items including furniture and plants. The reason for this is that any items remaining on the balcony may become projectile missiles in the event of a wind storm causing damage to the property.

In the event of a storm it may be necessary to enter unit owners' apartments under emergency circumstances. In order to avoid damaging your door and

entry, in an emergency situation, it is in your best interest to ensure that your keys have been left with security or with a trusted owner.

We will provide updates to all residents if there are issues with an approaching storm. Please make sure to update all contact information with the Management office so that you can be on our call/email list. This will allow us to communicate with you during a weather event.

If you have any questions, please feel free to call at any time. Let's be safe during this hurricane season!

**DON'T FORGET TO CLEAR YOUR BALCONIES,
LEAVE YOUR KEYS AND UPDATE YOUR CONTACT
INFORMATION!**

Sincerely,
Stephanie

June 2019 Event Calendar

Sun	Mon	Tues	Wed	Thurs	Fri	Sat
= Local Bus Service <div> NEW MOON WAXING CRESCENT FIRST QUARTER WAXING GIBBOUS FULL MOON WANING GIBBOUS LAST QUARTER WANING CRESCENT </div>						
						1 Fees Due 42 nd Day Omer
2 	3 	4 BINGO! 6:45PM EID AL-FITR: End of Ramadan	5 ART Class 1:00 PM 	6 	7 	8 Management Office Open 9am to 1pm 49 th Day Omer
9 Happy Shavuot and a blessed Pentecost! 	10 Shavuot II	11 BINGO! 6:45PM	12 ART Class 1:00 PM 	13 	14 HAPPY FLAG DAY	15
16 HAPPY Father's Day 	17 	18 BINGO! 6:45PM	19 ART Class 1:00 PM 	20 	21 Summer Solstice	22 Management Office Open 9am to 1pm
23/30	24 	25 BINGO! 6:45PM	26 ART Class 1:00 PM 	27 	28 	29 41 st Day Omer

Hemispheres Administration Office	Places to Eat	Emergency Phone Numbers	
1980 South Ocean Drive, Hallandale Beach, FL 33009 Office Hours: Monday through Friday - 8:00am to 4:00pm DEPARTMENTS:	Blue Bar and Grill (Oclub) 954-251-2658	Security	954-456-1626
		Bay North Front Desk	954-456-1965
	Juniper (Bayside) 954-544-3370	Bay South Front Desk	954-458-1985
		Ocean North Front Desk	954-458-1950
	Roman's Snack Bar (Opool)	Ocean South Front Desk	954-458-1980
- Resident Services 954-457-9732 ext. 559 residentservices@thehemispheres.com	954-454-1111	Mauricio Perez (Security)	954-457-9732 ext. 551 mperezfieldforce@aol.com
- Gabby Gonzalez/Maintenance/Contractor 954-456-1257 maintenance@thehemispheres.com	Snowy Mini-Mart (OS) 954-458-2930	Board of Directors Mark Kiser – President Alfred Marzouk – Treasurer Hank Rosenblum – Secretary Barbara Drabkin – Director David Simhon – Director Geoffrey Colton – Director Ivonne Gonzalez – Director Leonard Davenport – Director	
- Luz Arias/Access Control 954-457-9732 ext. 305 accesscontrol@thehemispheres.com			
- Stephanie Sicard/Assistant Manager 954-457-9732 ext. 304 adminassistant@thehemispheres.com generalmanager@thehemispheres.com	Commercial Units		
- Ali Seif/Receptionist 954-457-9732 ext. 301 reception@thehemispheres.com	Beauty Salon (OS) 954-457-8428		
- Selassie Bailey/Accounting 954-457-9732 ext. 550 accounting@thehemispheres.com	Gladys Martinez Elite Properties & Investments LLC (ON) 305-321-7889	Contracted Services Atlantic Pacific - Management Atlantic Pacific - Accounting Field Force Protective - Security Park One, Inc - Valet Greenway - Lawn Maintenance Amercian Services Industries - Housekeeping	
- Gilbert Martinez/General Manager 954-457-9732 ext. 308 generalmanager@thehemispheres.com	Neil Lechtner, Attorney (BS) 954-457-4357		
- Jose Rubio/Operations Manager 954-457-9732 ext. 310 operations@thehemispheres.com	Nohmis Construction (BS) 954-591-8361		
- Hector Franco/Chief of Maintenance 954-457-9732 ext. 314			
- FPL 954-797-5000		thehemispherescondo.vertilinc.com	
- AT&T Uverse (Customer Service) 866-299-6824			
- Hemispheres Office Fax 954-456-8376			



MARTINHOFFMAN P.A.

BROKER - ASSOCIATE



Martin Hoffman P.A.

(954) 605-4823

martinhoffman@keyes.com

martinhoffmansellsouthflorida.com

Martin Has Been Helping Buyers & Sellers
Since 1985



MARYELLEN CLOSIUS, GRP

REALTOR ASSOCIATE/RELOCATION SPECIALIST

Mary Ellen Closius P.A.

(954) 471-4626

maryellenc@keyes.com



THE HEMISPHERES - PENTHOUSE - \$315,000

2/2 - Simply Amazing Views! PRICE Reduced for Quick Sale. MILLION DOLLAR \$\$\$ VIEW! Enjoy amazing sunsets w/gentle breezes from this rarely available, private penthouse balcony. Spacious, is in exceptional condition & ready for your personal touches. 5 Star resort-style living features 2 onsite restaurants & pool side cafe. Exclusive amenities for residents include: 2 large pools, 2 fitness centers, tennis, basket ball, mini mart, beauty salon, clubhouse, sauna, ballroom, SHUTTLE BUS, beach concierge service, Marina with Boat Slips!! Yes, dock your Boat where you Live!! Unique, elevated living experience is close to restaurants, entertainment, Aventura Mall, airport & seaport.

OWNER WILL ENTERTAIN ALL REASONABLE OFFERS

Antonio Esposito

(Hemisphere Resident) WITH

CENTERLINE SERVICES GROUP, INC.

REPAIRS AND REMODELING SERVICES

CALL US. No Job is too small.

20 Years of Experience.

Tel: 786-326-7105



State License and Insured
CGC 1521387

COME OUT AND ENJOY
A FUN FILLED

**NIGHT OF
BINGO!**



Held every Tuesday in the ocean terrace room.

DOORS OPEN AT 6:15 PM

AND THE GAMES START AT 7 PM.

THERE IS A MINIMUM FEE OF \$15 TO PLAY

TOTAL FITNESS TRAINING

Programs, instruction, nutrition

Mark Paul

Private Trainer

412-628 1848



TRAINING IN YOUR HOME, OFFICE OR GYM

markjapaul85@gmail.com



ASK NELSON

**For Current
Specials**



Nelson : **954.914.9274**

305.345.7671

themagichands@aol.com

START TIME 10:30AM

MONDAYS at the bay side

FRIDAYS at the ocean side



magicalhandsdetailing.com



DELIVERS EXCLUSIVE PIZZAS!



Enjoy Free & Fast delivery!
7 Days a week
4pm -10pm

TRADITIONAL ALL-DRESSED PIZZA

Always delicious!

Our Signature homemade tomato sauce, fresh mozzarella, peppers, mushrooms, pepperoni and chopped bacon - \$12

CHICKEN MUSTARD PIZZA

Our Masterpiece!

Our Signature homemade tomato sauce, marinated mustard chicken breast, roasted garlic, spinach, mozzarella, and freshly grated Parmesan - \$12

All pizzas are approximately 11 inches, serves 1-2
* 10% Discount on pick ups

MARGARITA PIZZA - A Blue classic!

Our Signature homemade tomato sauce, fresh mozzarella and fresh basil - \$10

(addition of pepperoni for \$2 more)

VEGETARIAN PIZZA

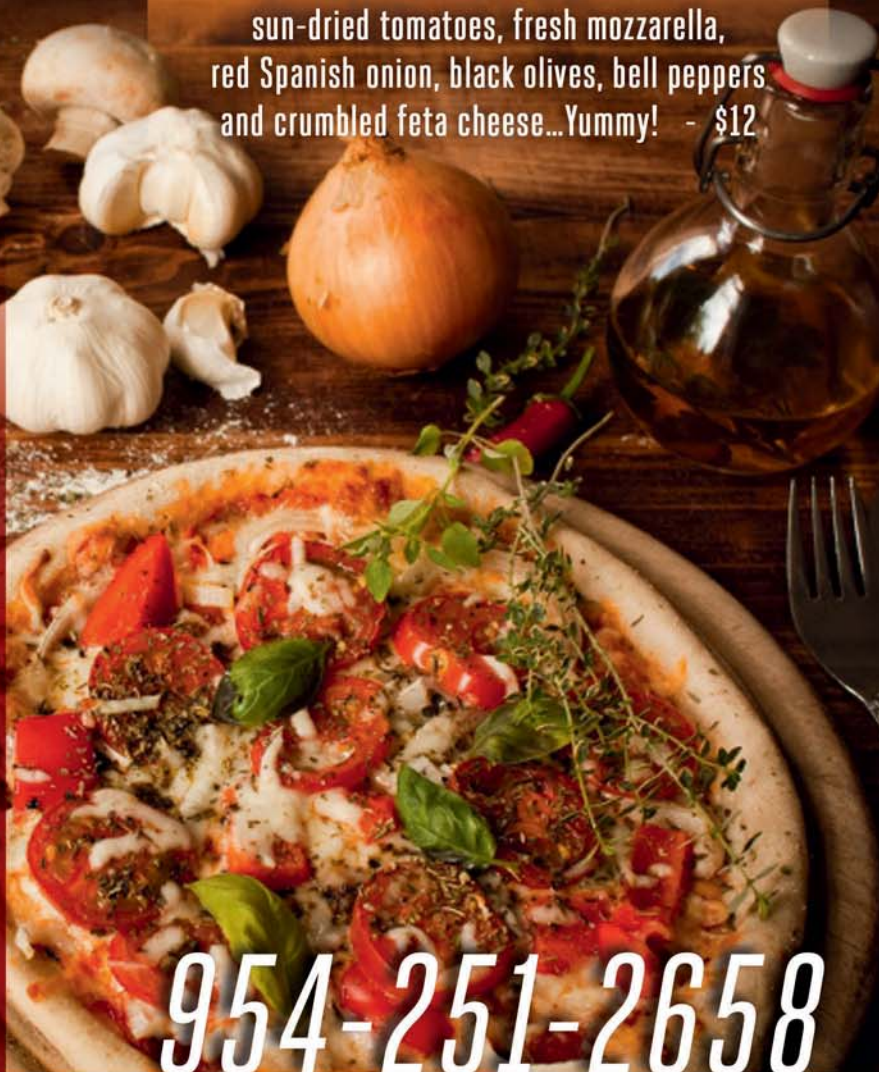
Packed with flavor!

Our Signature homemade tomato sauce, fresh mozzarella, mushrooms, roasted red peppers, onions, topped with fresh basil and a sprinkle of dried oregano - \$11

HEMISPHERES MEDITERRANEAN PIZZA

A must try!

Our Signature homemade tomato sauce, sun-dried tomatoes, fresh mozzarella, red Spanish onion, black olives, bell peppers and crumbled feta cheese...Yummy! - \$12



954-251-2658



www.bluebargrill.com

BLUE BAR & GRILL

1960 S. OCEAN DRIVE HALLANDALE BEACH - FL 33009

Reservation (954) 251 2658 Located in the Hemispheres Condo - Ocean Side



HAPPY HOUR
FROM 3PM TO 7PM
EVERY DAY

SUMMER specials

monday

**\$1 OYSTER - \$8 MARTINI
ALL NIGHT LONG**

tuesday

**\$6 MARGARITA
TACOS NIGHT !**

wednesday

**50% OFF ON SELECTED
WINE BOTTLES
ITALIAN NIGHT**

thursday

**\$6 SANGRIA - \$20 PITCHER
PAELLA NIGHT**

friday

**HAPPY HOUR ALL NIGHT
LATIN NIGHT**

saturday

**LIVE MUSIC
FROM 8PM TO MIDNIGHT**

sunday

**\$3 DRAFT BEERS
BURGER NIGHT**



www.bluebargrill.com

RESERVATION **(954) 251-2658**

1960 S. OCEAN DRIVE HALLANDALE BEACH - FL 33009

Located in the Hemispheres Condo - Ocean Side

DENISE & JOHN BRACCO

Decorus Realty

CALL, TEXT OR EMAIL!

dbhwd@aol.com

DENISE: 954-931-4416 • JOHN: 954-931-4415

www.DeniseandJohnBracco.com



DENISE & JOHN BRACCO
OCEANFRONT SPECIALISTS



THIS MONTH'S FEATURED LISTING - 1950 S OCEAN DR #17C



IT'S ALL ABOUT THE VIEW! OCEAN NORTH, FACING SOUTH...

GREAT OCEAN, POOL & INTRACOASTAL VIEWS! 1 BED, 1.5 BATH. MUST SEE! CALL NOW!

VIEW THE VIRTUAL TOUR AT [HTTPS://BIT.LY/2W3VVEH](https://bit.ly/2w3VVEH)

**Photos, Virtual Tours, Rentals, All Featured Listings, Join Our Email List, Market Reports
and Listing Updates: www.DeniseandJohnBracco.com**

Find Your Condo Value: www.HemisphereValues.com

JOIN US ON SOCIAL MEDIA!

